

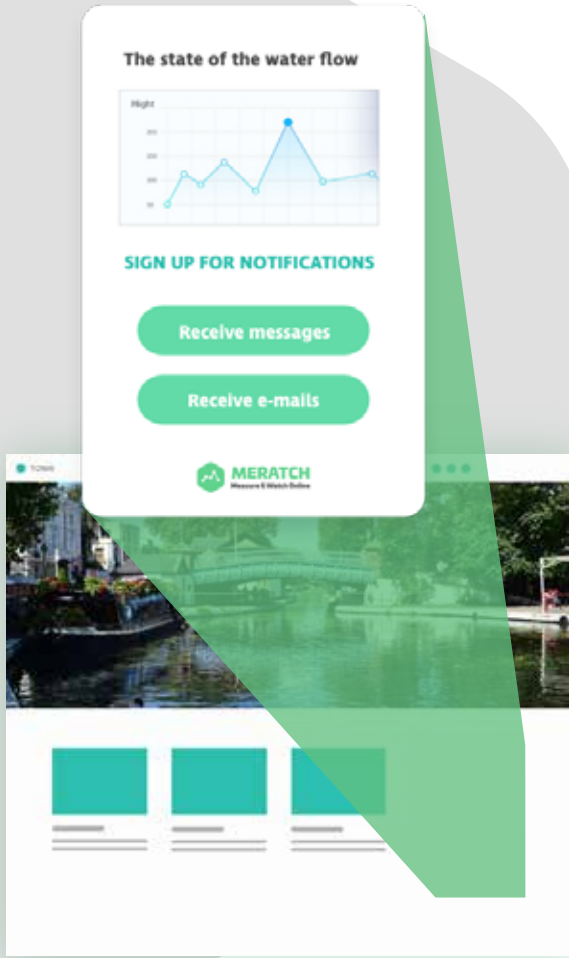
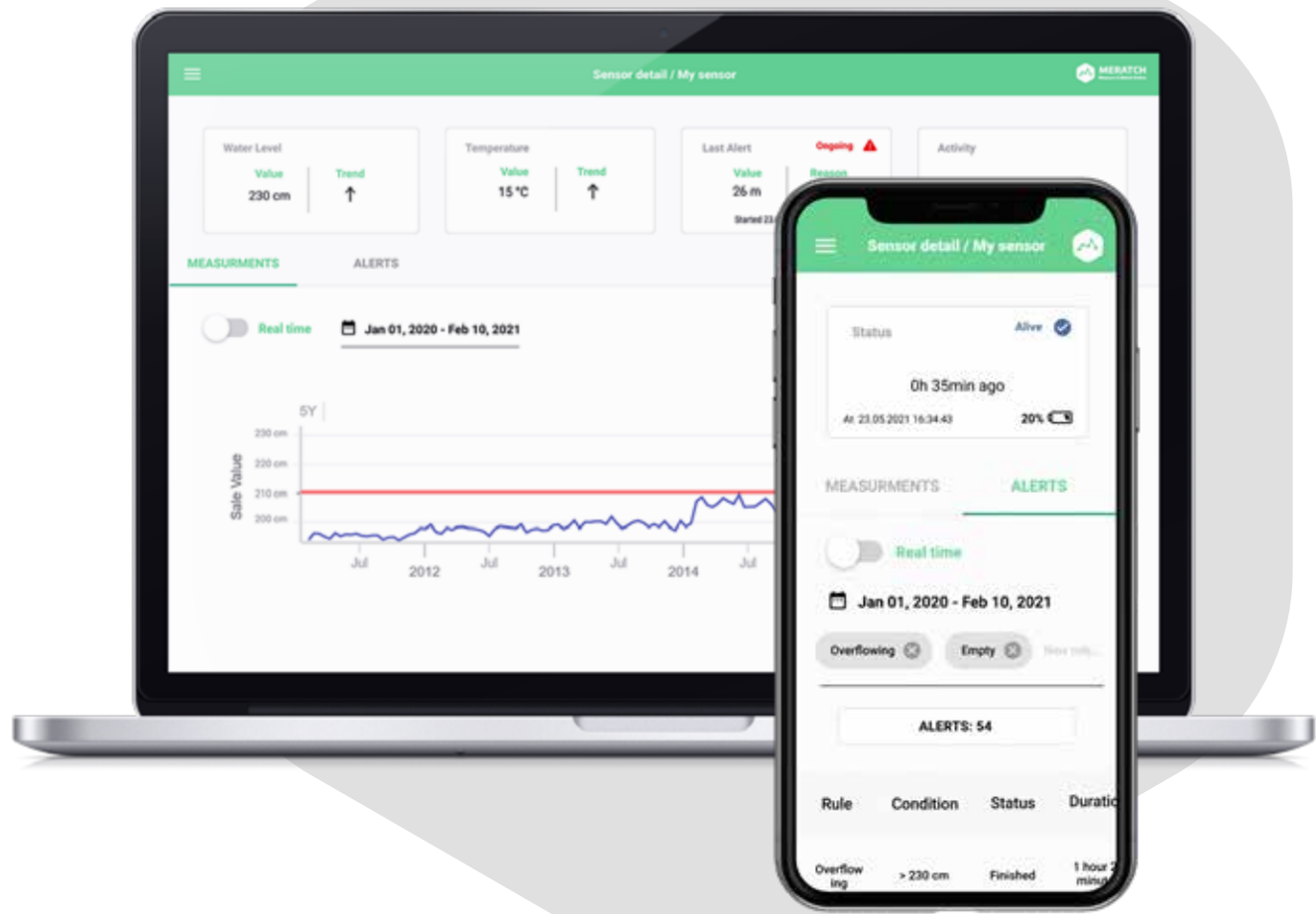


**Radarový senzor**

# Warning and monitoring system



Widget on website



✓ Flood risk warning

✓ Groundwater monitoring

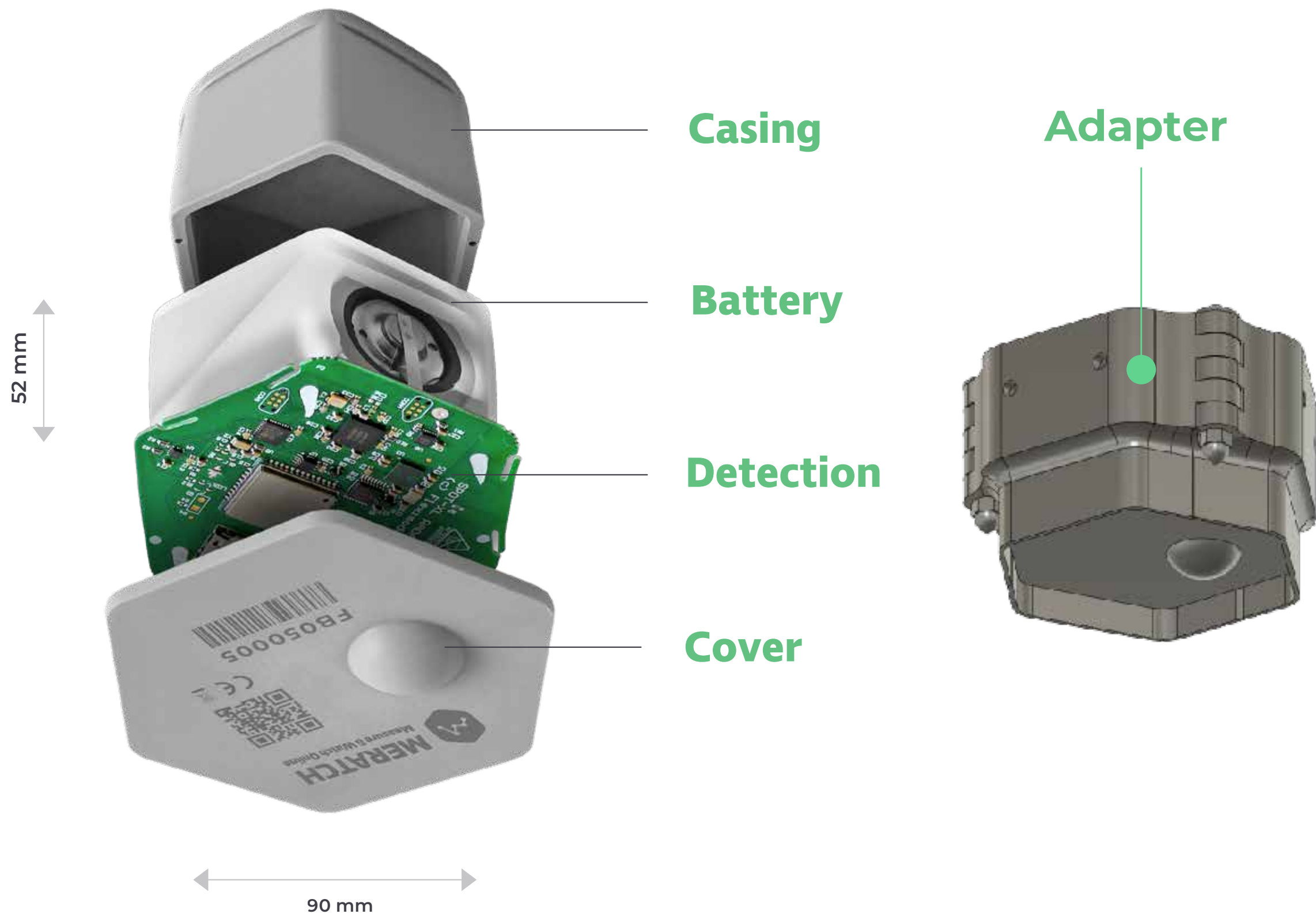
✓ Water tank monitoring

✓ Sewer system monitoring

# IoT Water Level Meter

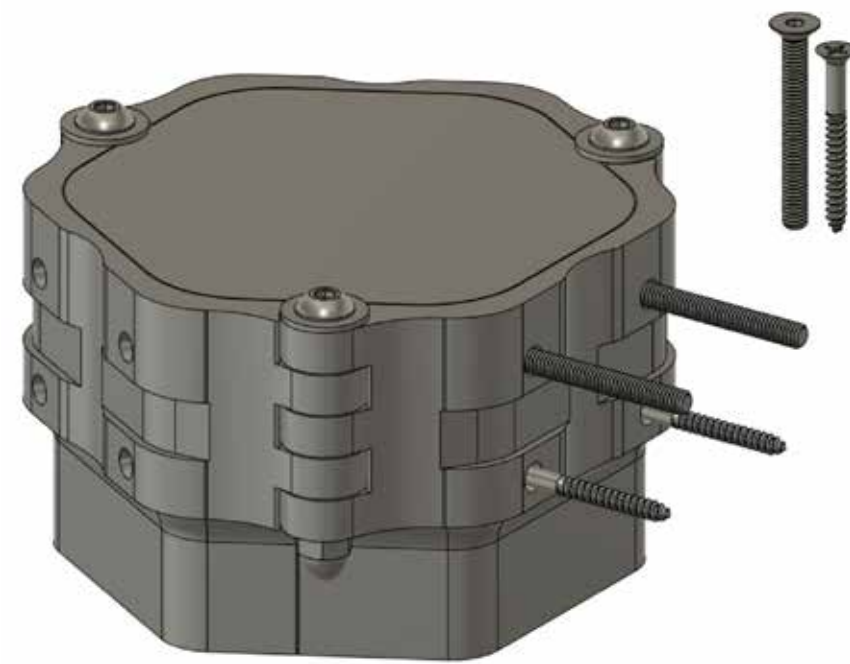
The IoT Water Level Meter precisely measures distances up to 50 meters with an accuracy of half a millimeter.

Measurement method	nanoradar
Radar range	20 cm - 50 m
Measurement resolution	0.5 mm
Weight	300 g
Dimensions	Φ 90 mm    ± 52 mm
Casing	Ultrasonic welded into one piece
Ingress protection	IP68
Impact resistance	IK10
Operating temperature	-40 to +75 °C
Power	3.6V, 14 Ah alt. 19 Ah
Battery life	> 8 years
Network	Lora™, SigFox, NB-IoT, LTE-M, +BLE 5



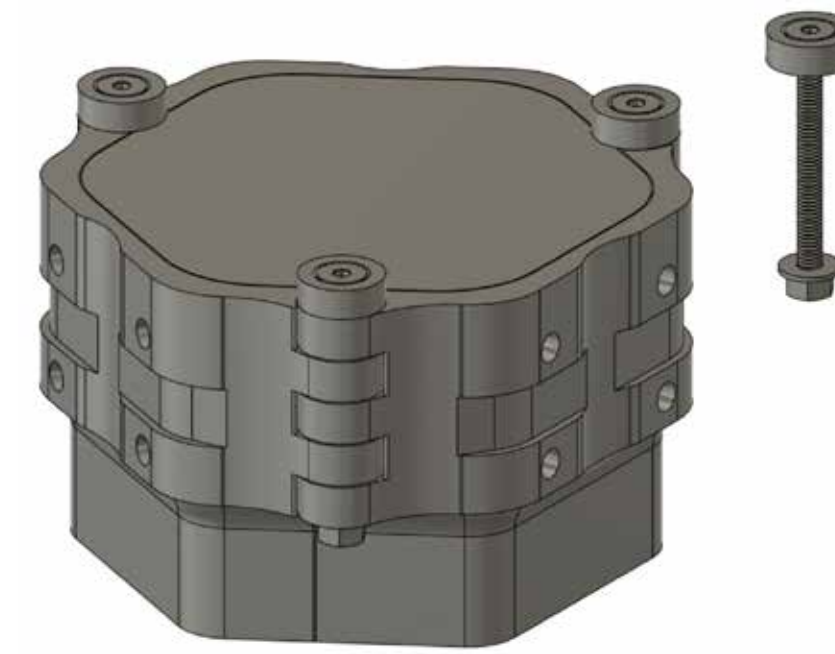
Lacuna

# Installation methods



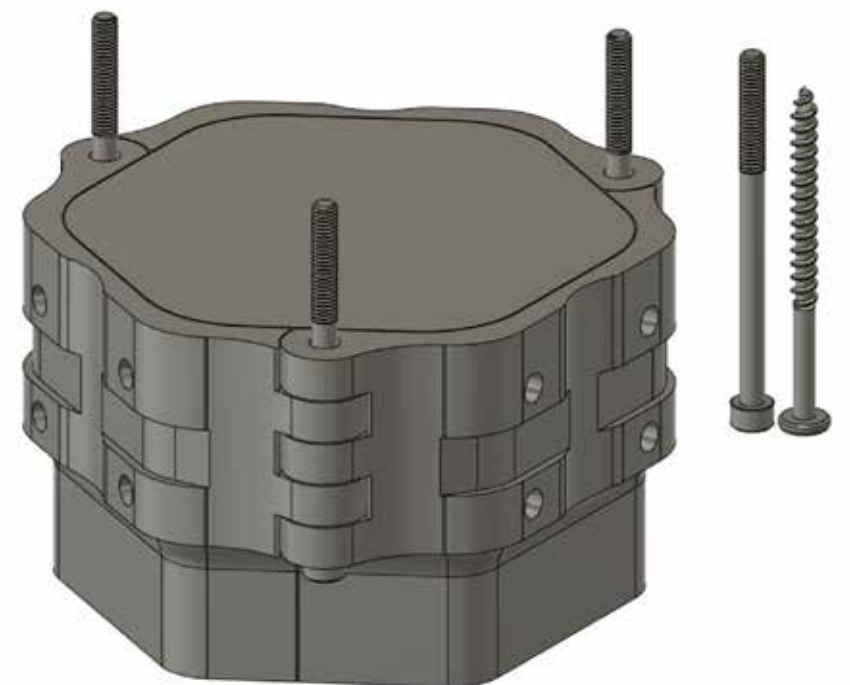
## Side mounting

Using flat head counter-sunk screws



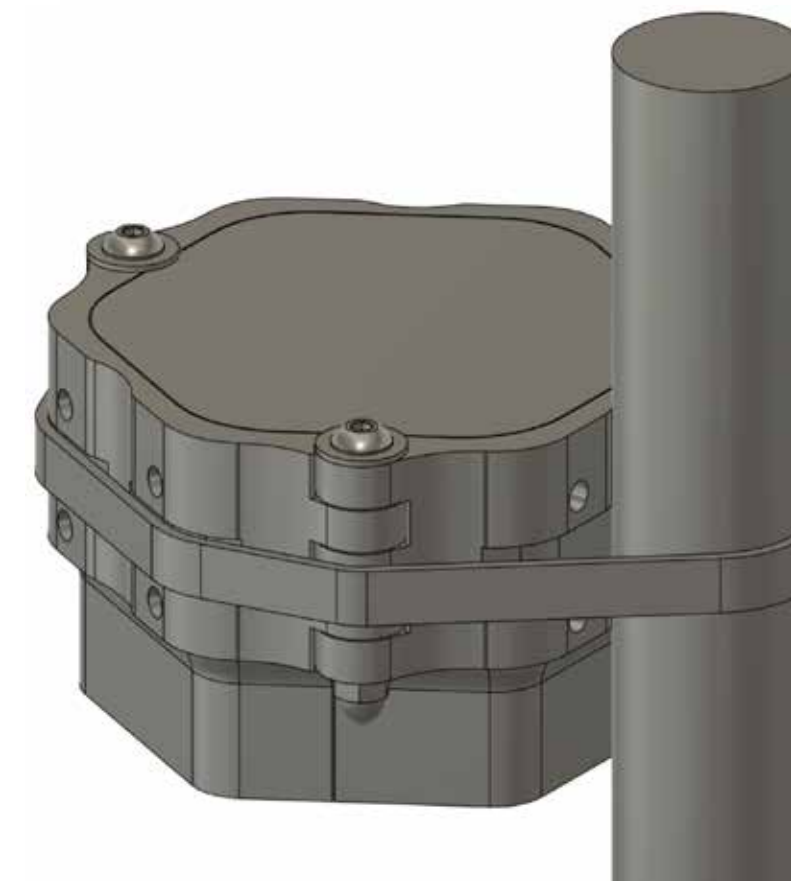
## Magnetic top mounting

Using flat head countersunk screws with magnetic washers



## Top mounting

Using longer screws, reaching through our mounting adapter into mounting object

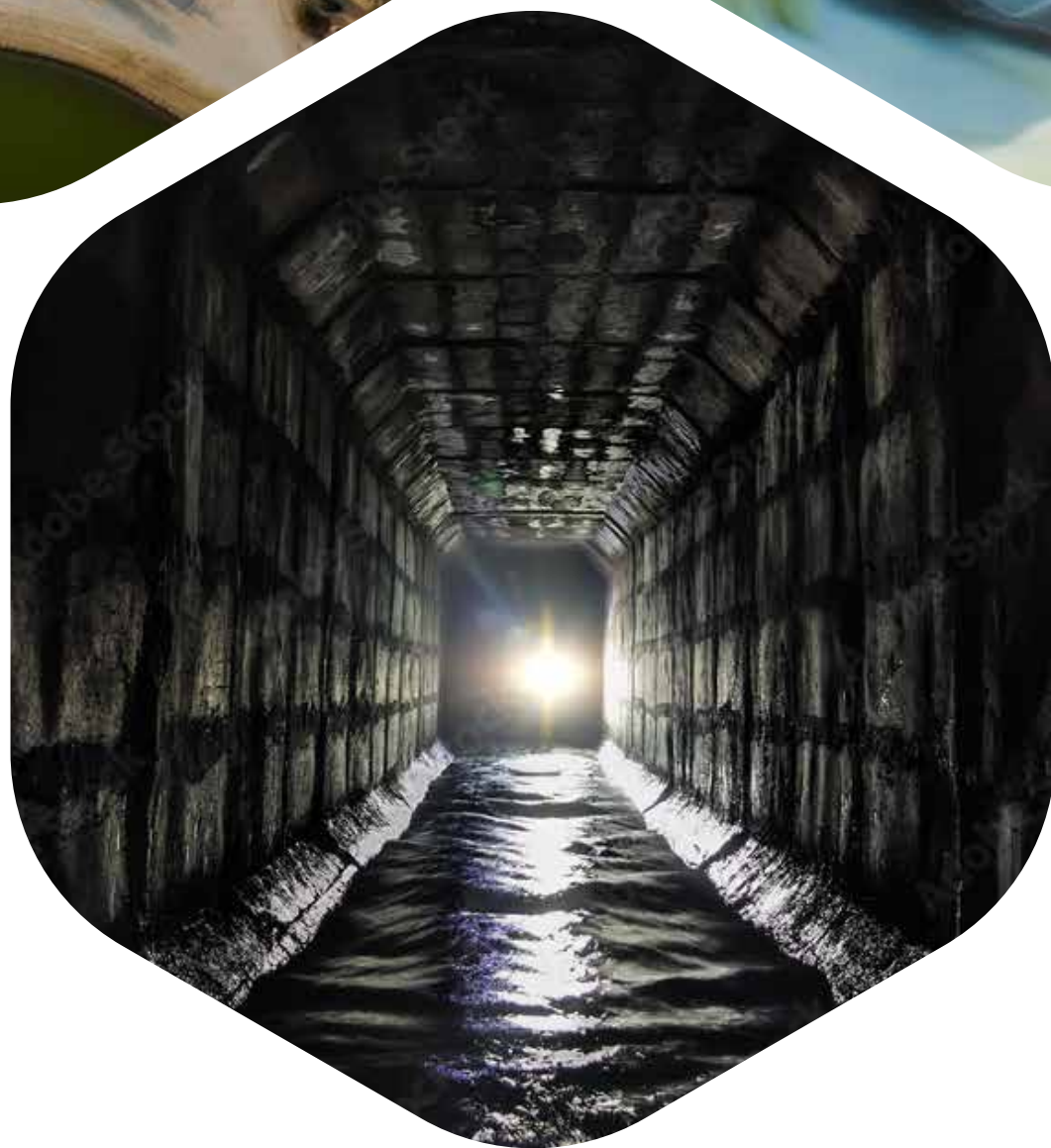


## Mounting to pole

Using steel mounting strap



# Use - cases





## Groundwater monitoring

In Slovakia, we submitted a project for measuring groundwater around dams and reservoirs in a **thousand measuring points around Bratislava**, where we **fully automate the measurement process**, thus saving staff time and fuel. The **data** is accessible online **in real time** for processing into accurate and long-term statistics.





# Wastewater management

**Sewerage capacity** and **wastewater management** is a major **challenge for large cities** that want to grow and develop. MERATCH is ready to monitor the level of **wastewater in tanks**, but as one of the few in the world, it is able to measure and send data on the state of the **underground sewerage system**.





## Water level monitoring

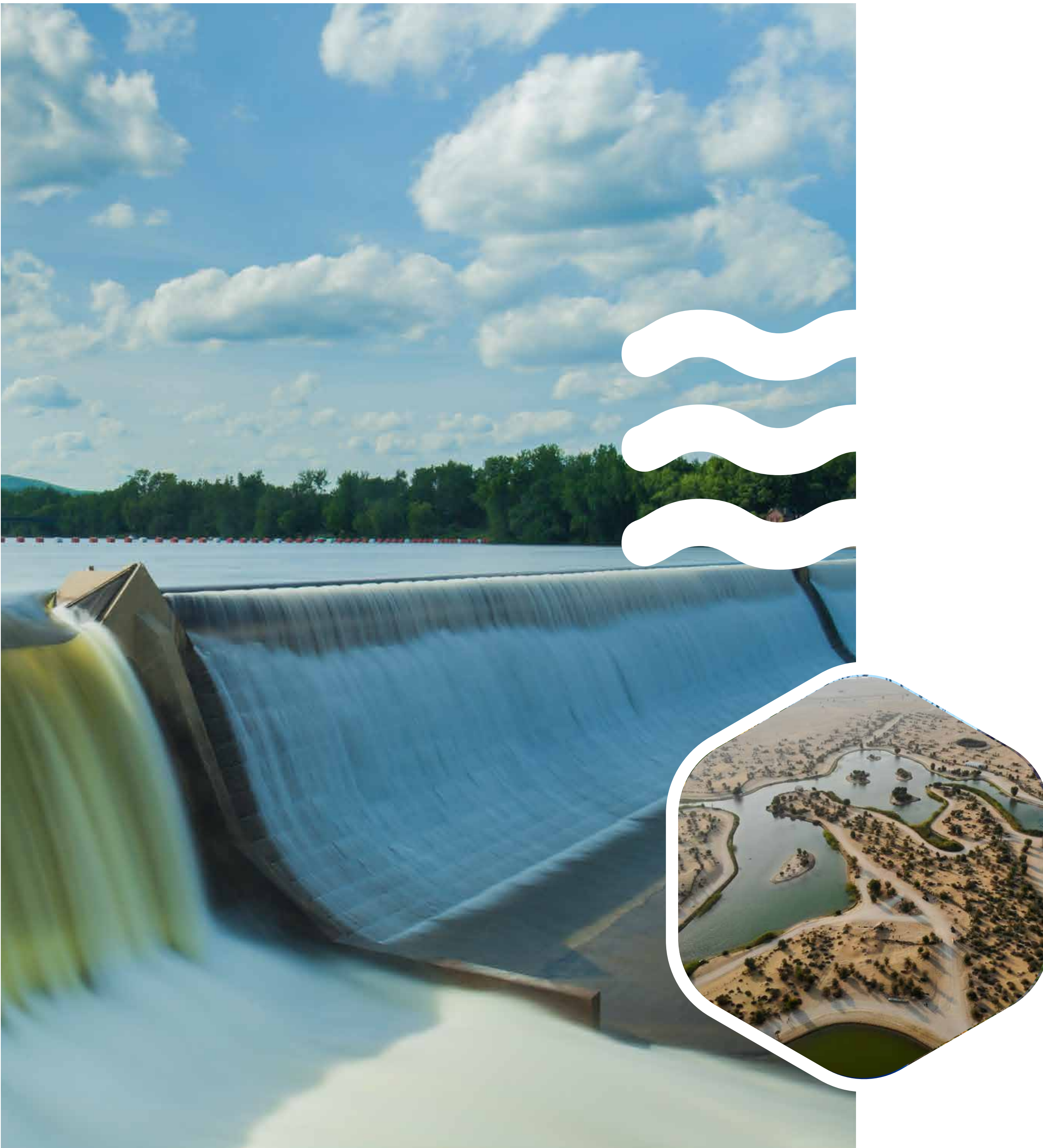
In the period of demonstrable human influences on the climate, **the weather is increasingly extreme**. Long droughts alternate with torrential rains and these are often associated with **sudden and devastating floods**. Damage to property or the health of the population can be prevented by **early warning of rising flow levels**. **MERATCH - Measure & Watch Online** is a **tireless monitor** of even the smallest changes in the water level 24 hours a day, and with its **automatic warning message** you can protect the most valuable in time.





## Dams & water reservoirs monitoring

**Dams and water reservoirs** are often too deep and located in a remote area that is difficult to monitor. MERATCH can also help in these situations. **The radar range** can be up to **50 meters** and thanks to **advanced technology** it is able to work **anywhere in the world**, because it communicates with **every IoT network** and also **via satellite**.



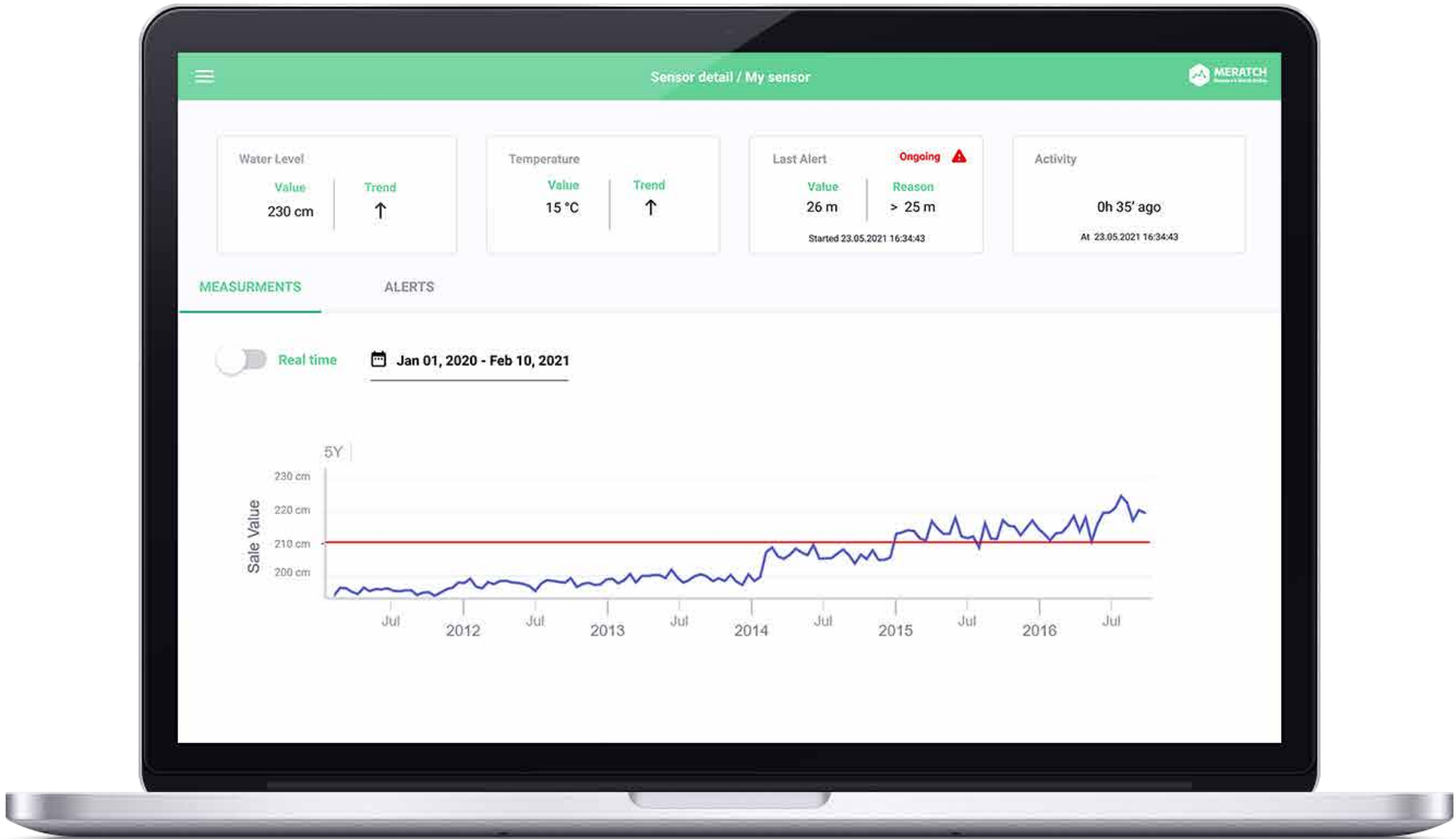


**SOFTWARE**



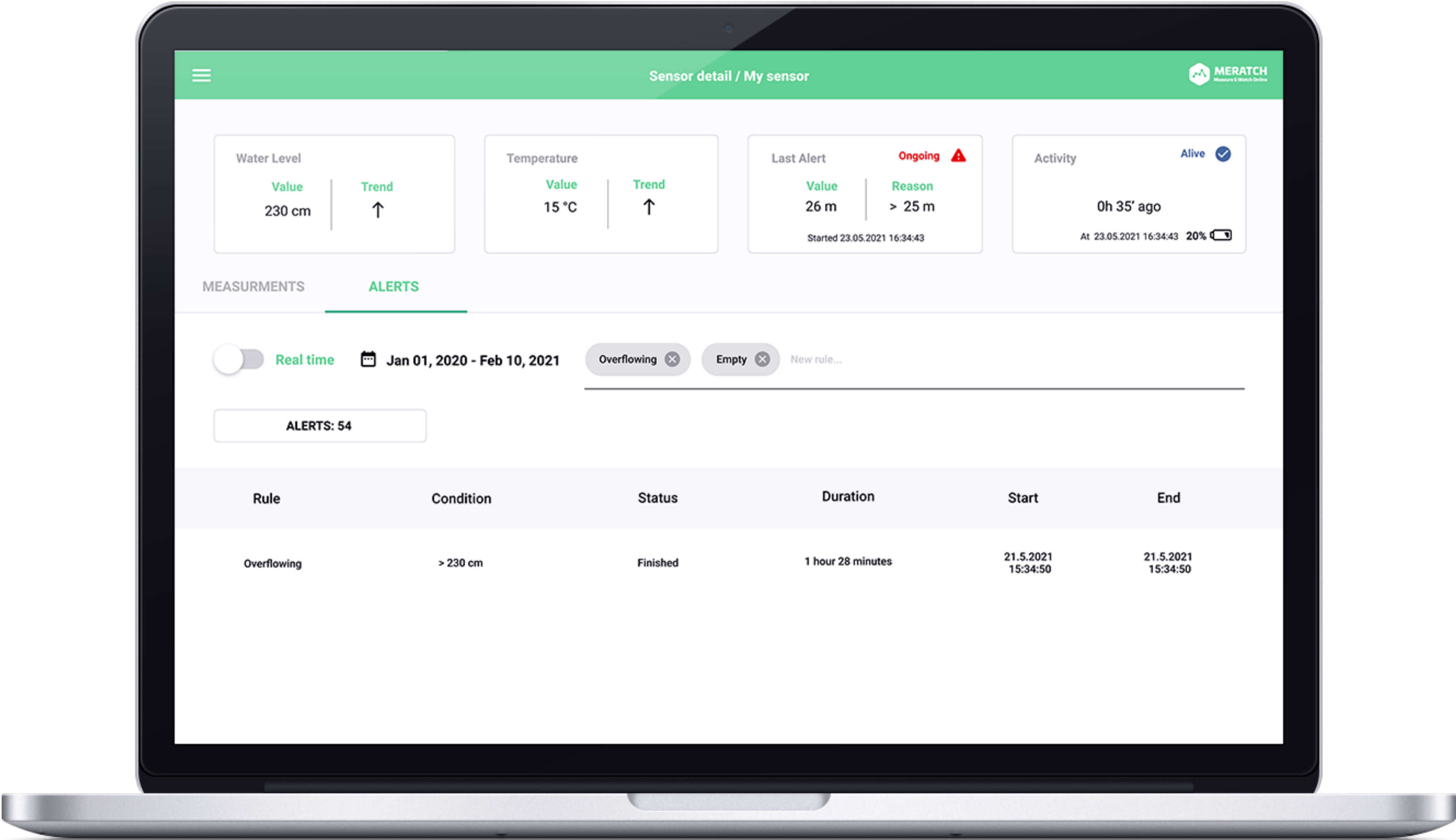


# Sensor detail - Measurements



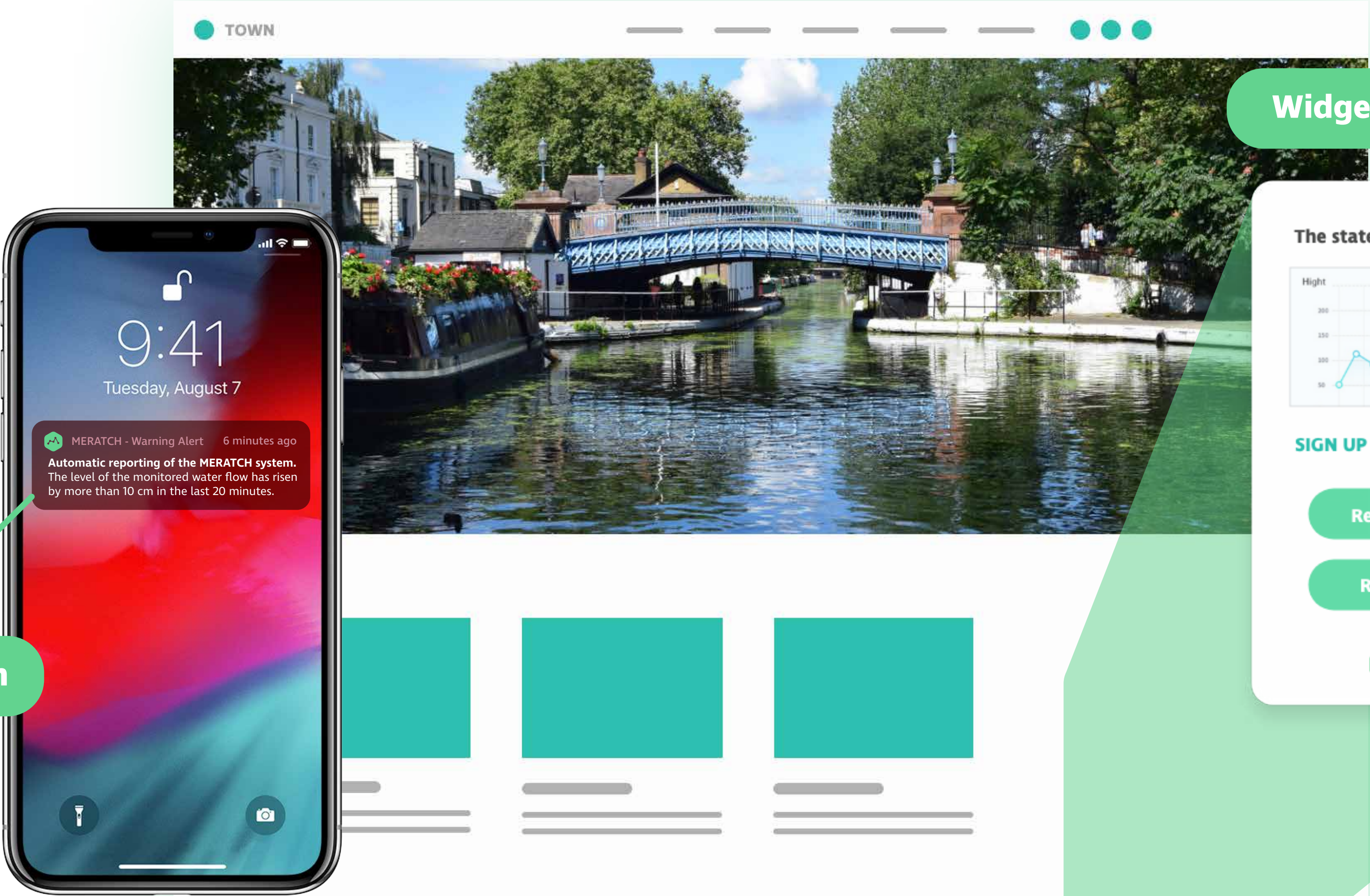


# Sensor detail - Alerts





# Alerts - Automatic Warning Notifications



Widget on website

SMS notification





## GOSPACE LABS s. r. o.

+421 905 649 405

[info@gospace.tech](mailto:info@gospace.tech)

[www.gospace.tech](http://www.gospace.tech)



Ilkovičova 8 Bratislava, Slovakia



251 18th Street, South Suite 650 Arlington, Virginia 22202, United States